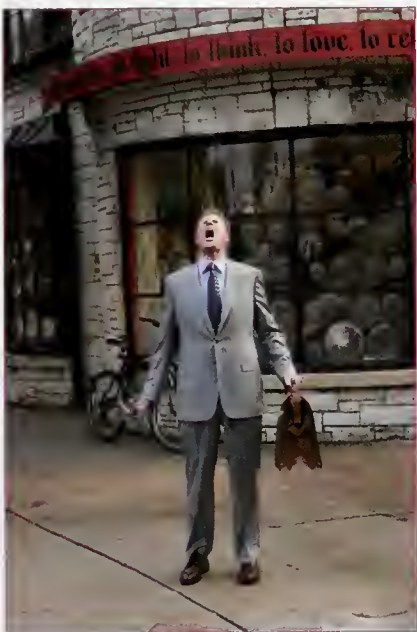


the streets of the city with an old pal and finds himself slipping back into old habits of petty crime. Freddy Rodriguez ("Lady in the Water") and Eva Longoria (TV's "Desperate Housewives") co-star. Screenwriter David Ayer ("S.W.A.T.") helms his directorial debut, scripts and produces with Andrea Sperling ("The Quiet"). (MGM, 11/10)

Stranger Than Fiction

Will Ferrell ("Talladega Nights: The Ballad of Ricky Bobby") stars in this comedy as Harold Crick, an IRS agent who one day starts to hear the events of his humdrum existence chronicled by a voice in his head. It turns out that the narrator is Kay Eiffel, played by Emma Thompson ("Nanny McPhee"), an author of tragic novels who has a severe case of writers block. What she does know is that events have been set



in motion that will lead inevitably to her character's death. What she doesn't know is that Harold is a living, breathing human being, and he's determined to change the course of Kay's novel—and his life. Maggie Gyllenhaal ("World Trade Center"), Dustin Hoffman ("Meet the Fockers") and Queen Latifah ("Last Holiday") co-star. Marc Forster ("Stay") directs; Zach Helm scripts his debut; Lindsay Doran ("Nanny McPhee") produces. (Sony, 11/10)

A Good Year

Reuniting with his "Gladiator" director Ridley Scott (whose brother Tony also has a movie coming out this month a fortnight later), Russell Crowe stars in this dramedy as a London-based investment banker who inherits a small vineyard in Provence. But, when he reluctantly settles into pastoral rural life, he encounters a beautiful California woman who claims she owns the property. Albert Finney ("Big Fish") and Abbie Cornish ("Somersault") co-star. Marc Klein ("Serendipity") scripts based on the novel by Peter Mayle, who hatched the idea for the book with Scott; Scott also produces. (Fox, 11/10)

Fur

Subtitled "An Imaginary Portrait of Diane Arbus," this drama starring Nicole Kidman ("Bewitched") isn't a biopic on the life of photographer Diane Arbus but rather a blend of fact and fiction "to express what might have been Arbus' inner experience on her extraordinary path"—an homage to an artist whose work, which challenged accepted notions of beauty and ugliness using radical techniques and subject matter, was at odds with her personal life as a 1950s housewife. Here, an enigmatic neighbor played by Robert Downey Jr. ("A Guide to Recognizing Your Saints") launches Arbus on her artistic journey. Steven Shainberg directs his first film since 1996's "Secretary"; Erin Cressida Wilson ("Secretary") scripts based on the biography by Patricia Bosworth for a paparazzi of producers. (Picturehouse, 11/10)

The Return

Continuing her string of post-"Buffy" genre flicks, including "The Grudge" and its sequel, Sarah Michelle Gellar stars in this supernatural thriller as a traveling saleswoman who is haunted by visions of the murder of a young woman she's never met, and the heartless killer appears to have targeted her as his next victim. Determined to fight back, she is guided by her nightmares to the victim's hometown and discovers that the murder she is trying to solve may be her own. Kate Beahan ("The Wicker Man"), Adam Scott ("Monster-in-Law") and Sam Shepard ("Stealth") co-star. Asif Kapadia ("The Warrior") directs; Adam Sussman scripts; Aaron Ryder ("The Prestige") and Jeffrey Silver ("The Santa Clause 3") produce. (Rogue, 11/10)

TSS

THEATRE SERVICE & SUPPLY

An Entertainment Technology Company

QUALITY PRODUCTS

- * Digital Cinema Projection
- * Digital Sound Systems
- * Film Cinema Equipment
- * Film Studio Equipment
- * Cinema Speaker Systems
- * Auditorium Seating
- * POS/Ticketing Systems

ENGINEERING SERVICES

- * Auditorium & Booth Design
- * Projection & Sound Installation
- * Xenon Light & Color Temperature analysis
- * Maintenance
- * Repairs
- * Training

theatreser@aol.com
www.theatreservice.com

Phone (818) 701-4475
Fax (818) 701-0394

PRESENTING THE FANTASTIC 4

XR171 ANTI-STATIC

non-yellowing
pearlescent surface

XRL LENTICULAR

prevents cross reflection of light
Cotton backing prevents bellying
on curved screens

HILUX

silver surface
approved for 3D

MATTE WHITE

seamless
heavy gauge vinyl

WHEN QUALITY IS NECESSARY
SELECT ONE OF THESE SPECIALIZED SCREENS

TECHNIKOTE

TECHNIKOTE CORP.
PROFESSIONAL SCREENS OF SUPERIOR QUALITY



Available from your
authorized Theatre
Equipment Supply
Dealer

63 Seabring Street, Brooklyn, N. Y. 11231—(718) 624-6429 / Fax: (718) 624-0129